



#### Possible applications

- 2D + 3D laser engraving
- surface finishing
- deep engraving
- microwriting
- annealing
- marking
- plastics
- metals
- wood
- foil

## SERIES BL7000

### Fast and accurate marking with maximum labeling field

Due to continuous development, the new **BL7000 series** is available with a variety of optimizations and recommended for demanding requirements. Thanks to the new design, the BL7000 has a very large inscription area with the smallest possible footprint of the machine.

The **integrated control panel** is ergonomically integrated into the cabin and allows intuitive operation of the machine. The ability to load the system with crane, increased the flexibility of this system.

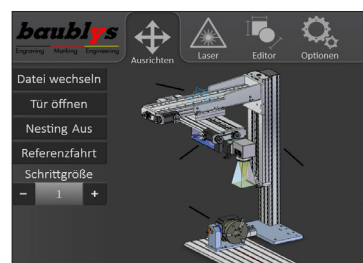
This machine is equipped with CNC control and maintenance-free fiber laser, thus reducing maintenance costs. Equipped with a fully enclosed cabin laser protection class 1 is fulfilled. Therefore no additional cost for laser protection is necessary.

The BL7000 series can also be equipped with alternate laser sources.

# SERIE BL7000

## HMI Interface

The control and programming software based on Windows 7 system software combines a modern look, decades of experience in the areas of engraving and marking and ensures intuitive and simple programming.

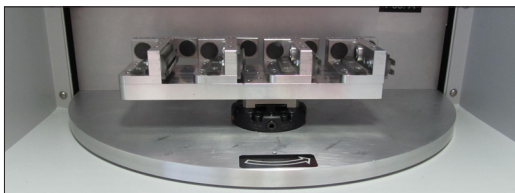


Available from Q2/2015.

## Product specification

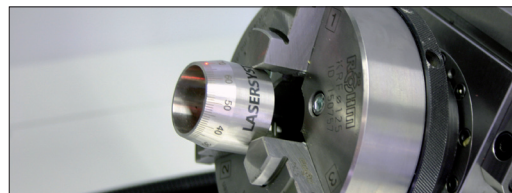
Laser type	UV laser	Green laser	Fibre laser	CO <sub>2</sub> laser
Wave length	355 nm	532 nm	1064 nm	10,6 µm
Puls rate	10 - 200 kHz	10 - 200 kHz	20 - 200 kHz	cw
Power	3 - 8 W	8 - 15 W	10 - 100 W	10 – 50 W
Inscription field	on request	max. 680 x 680 mm	max. 730 x 730 mm	on request
Control	CNC control			
System software	Windows 7			
Measurements	1.600 x 1.320 x 1.992 mm (L x W x H)			
Network connection	Yes			

## Options



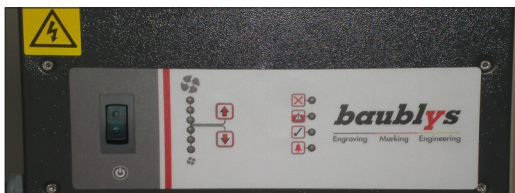
### Rotary table

Semi-automatic solutions can be realised. Loading/unloading times are reduced to almost zero.



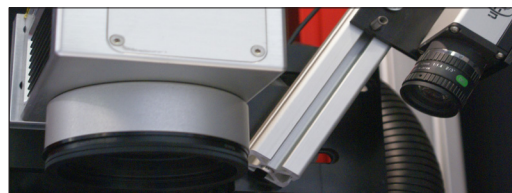
### Indexing attachments

Allows the carrying out of rotative inscriptions. Different versions are available.



### Exhaust system

Powerful devices for extraction of organic and inorganic particles.



### Camera systems

As makeready or position recognition camera.

## Custom devices

To increase the efficiency of the equipment, optional custom devices can be delivered.

## Further options

- Sign magazine
- Software options
- Laser pointer
- Interfaces
- Varioscan
- Optics
- CNC axis
- Codification

