



#### Possible applications

- synthetic materials
- surface finishing
- micro inscription
- deep inscription
- deep engraving
- colour change
- metals
- wood
- foils

## SERIES BL5000

Our experts have concentrated their many years of know-how in the **series BL5000** and re-planned and re-designed the system completely according to the latest state of the art. This series is available for the flexible, industrial use as an extremely flexible laser engraving and inscription machine in professional design. The BL5000 is equipped with a modern maintenance-free fibre laser, which guarantees extremely low running and maintenance cost.

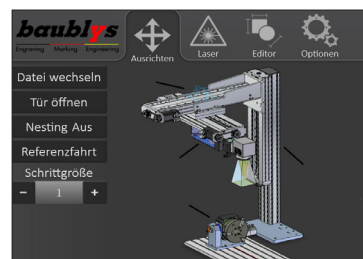
Thanks to a CNC-controlled Z-axis as a standard, the setting of the focus can be done conveniently and within a very short time. The standard touch screen facilitates the operation. As a fully encapsulated machine, the equipment complies with laser protection class 1, which means that no further safety installations are necessary for its operation.

Optionally, the BL5000 series can also be fitted out with alternative laser sources.

## SERIES BL5000

### HMI Interface

The control and programming software based on Windows 7 system software combines a modern look, decades of experience in the areas of engraving and marking and ensures intuitive and simple programming.

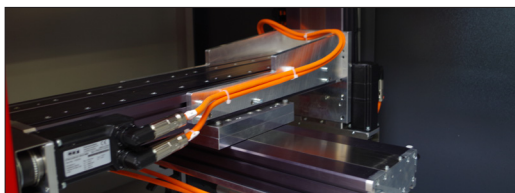


Available from Q2/2015.

### Product specification

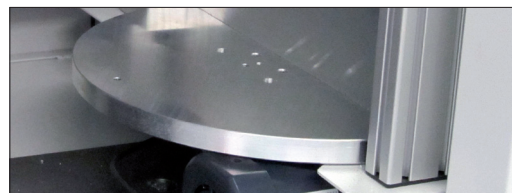
| Laser type         | UV laser                           | Green laser       | Fibre laser       | CO <sub>2</sub> laser |
|--------------------|------------------------------------|-------------------|-------------------|-----------------------|
| Wave length        | 355 nm                             | 532 nm            | 1064 nm           | 10,6 µm               |
| Puls rate          | 10 - 200 kHz                       | 10 - 200 kHz      | 20 - 200 kHz      | cw                    |
| Power              | 3 - 8 W                            | 10 - 20 W         | 10 - 100 W        | 10 – 50 W             |
| Inscription area   | on request                         | max. 480 x 480 mm | max. 480 x 480 mm | on request            |
| Control            | CNC control                        |                   |                   |                       |
| System software    | Windows 7                          |                   |                   |                       |
| Measurements       | 1.493 x 860 x 1.777 mm (L x W x H) |                   |                   |                       |
| Network connection | Yes                                |                   |                   |                       |

### Options



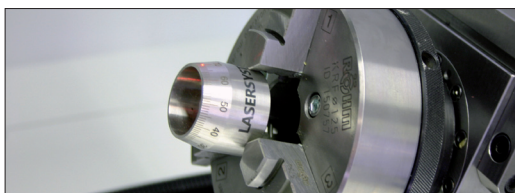
#### CNC axes

For extending the marking area.



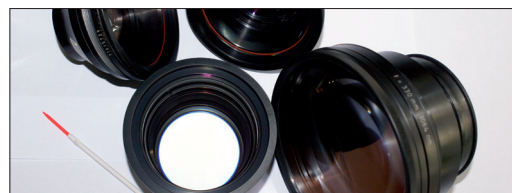
#### Rotary table

Semi-automatic solutions can be realised. Loading/unloading times are reduced to almost zero.



#### Indexing attachments

Allows the carrying out of rotative inscriptions. Different versions are available.



#### Lenses

Different versions make it possible to adapt inscription area and quality.

#### Custom devices

To increase the efficiency of the equipment, optional custom devices can be delivered.

#### Further options

- Sign magazine
- Laser pointer
- Extractor systems
- Interfaces
- Camera systems
- Varioscan
- Software options
- QR Code / Datamatrix

